

F

E

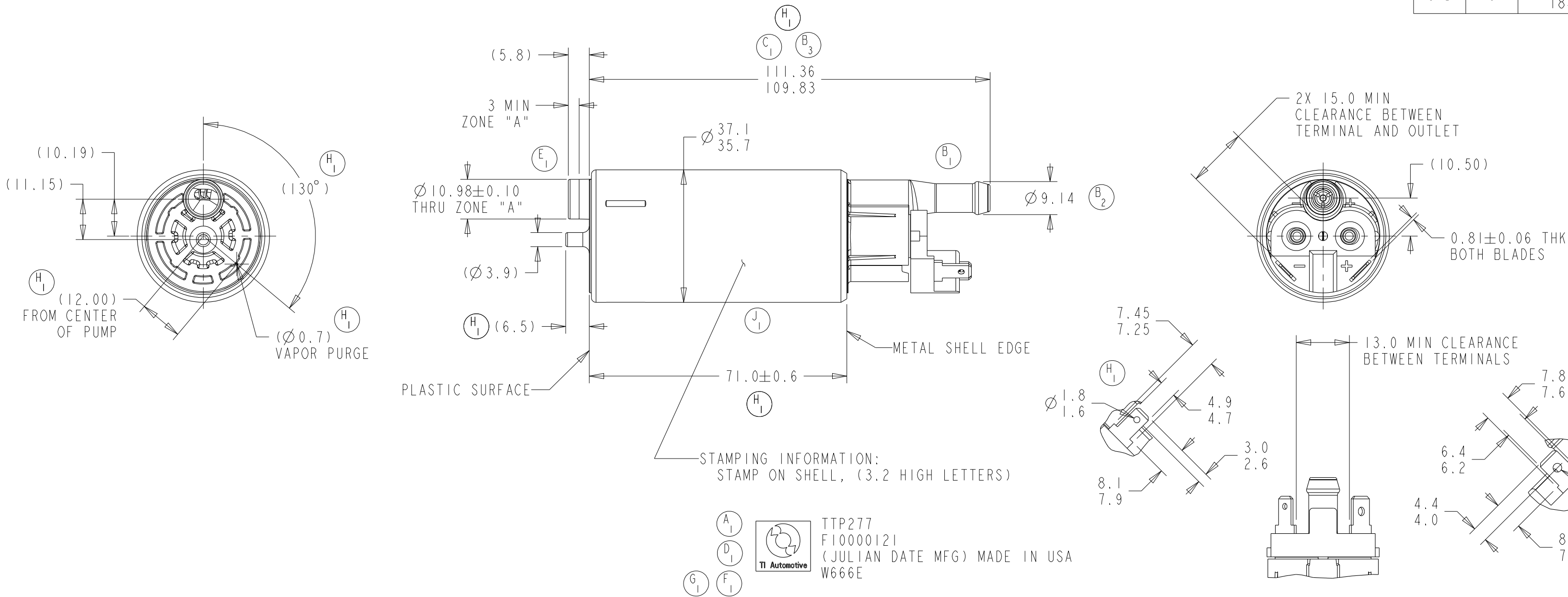
D

C

B

A

REVISIONS						
ZONE	LTR	DESCRIPTION	CHANGE No	DATE	BY	APPR'D
		RELEASE FOR PRODUCTION	68104	16JUL02	DRG	MMcK
5-C	A	A1 ADDED SECOND PATENT NUMBER	68570	12MAR03	RMB	MMcK
5-D	B	B1 CHANGED OUTLET COVER	68532	16APR03	RMB	MMcK
4-D		B2 9.14 WAS 8.00				
5-E		B3 110.25±0.60 WAS 113.9±0.6				
5-E	C	C1 110.51±0.77 WAS 110.25±0.60	68655	22AUG03	RMB	MMcK
5-C	D	D1 REMOVED PATENT NUMBERS	71528	08JUL08	DRG	WLL
6-D	E	E1 USILYS INLET PARTS WERE PMC	C'528	17MAY11	WDE	MMcK
5-C	F	F1 ADDED TI AUTOMOTIVE LOGO	78165	10MAY16	JAK	MAS
5-C	G	G1 ADD W666E TO STAMPING INFO	C'5018	15JAN18	RMB	BLM
	H	H1 RE-RELEASED PUMP AS A TI.9, WAS TI.78	80997	28FEB19	SLK	DJC
LETTER "I" NOT USED						
5-D	J	J1 DBTC000302 MAGNETS WERE 1840034	C3'4491	08AUG23	JTK	MLM



- NOTES:
- 1) PUMP WILL BE PACKAGED WITH THE FOLLOWING COMPONENTS TO PREVENT CONTAMINATION BY FOREIGN MATERIAL
 - INLET PLUG PROTECTOR
 - OUTLET PLUG PROTECTOR
 - POLYBAG
 - 2) MODEL TI.9

KEY PRODUCT CHARACTERISTICS				
REFER TO TI AUTOMOTIVE GLOBAL ADVANCED QUALITY PLANNING DOCUMENT CW-4-ALL-411 FOR THE CLASSIFICATION AND CONTROL OF KEY PRODUCT CHARACTERISTICS				
TYPE OF CHARACTERISTIC	SAFETY	REGULATORY	FUNCTION	FUNCTION PROCESS
	SC	SC	SC	SC
NUMBER PER EACH CHARACTERISTIC	--	--	--	--
TOTAL NUMBER OF CHARACTERISTICS	--	--	--	--
- TI AUTOMOTIVE CONFIDENTIAL AND PROPRIETARY - THIS DRAWING IS PROPERTY OF TI AUTOMOTIVE. TI AUTOMOTIVE CLAIMS PROPRIETARY RIGHTS IN THE SUBJECT MATTER SHOWN AND DESCRIBED ON THIS DRAWING AND RETAINS ALL INTELLECTUAL PROPERTY RIGHTS. THE DRAWING IS PROVIDED FOR REFERENCE PURPOSES ONLY AND ON THE EXPRESS CONDITION THAT IT WILL BE HELD IN CONFIDENCE. THIS DRAWING SHALL NOT BE DISCLOSED TO OTHERS OR USED FOR THE PURPOSE OF MANUFACTURE BY OR PROCUREMENT FROM OTHERS OF THE ARTICLE OR PART SHOWN WITHOUT TI AUTOMOTIVE'S EXPRESS WRITTEN CONSENT. NO LICENSE OR OTHER RIGHT IS GIVEN OR IMPLIED BY THE PROVISION OF THIS DRAWING TO RECIPIENT. COPYRIGHT, TI AUTOMOTIVE 2018, ALL RIGHTS RESERVED.				

METRIC
ALL DIMENSIONS ARE IN MILLIMETERS

DO NOT SCALE
DECIMAL TOLERANCES UNLESS OTHERWISE SPECIFIED
ONE PLACE ±0.25 TWO PLACE ±0.13 ANGLES ±1°

THIRD ANGLE PROJECTION
DIMENSIONS IN ACCORDANCE WITH ASME Y14.5 - 2009

630 COLUMBIA ST.
CARO, MI 48723
+1 989.673.7727

ENGINEER:	M.McKERVEY	10JUL2002	MATERIAL/SPECIFICATION:
DESIGNER:	D.GILBERT	10JUL2002	SEE NOTES

CAD SYSTEM: PRO/E	SCALE: 1:1	SHEET NO. 1 OF 1
-------------------	------------	------------------

REFERENCE ID/REV.: HJQG1121	2D PLM REFERENCE/REV.: AR0056695/AB
REFERENCE ID/REV.: 000127468/AB	3D PLM REFERENCE/REV.: AR0056675/AB

DRAWING NAME: FUEL PUMP OUTLINE	
SIZE: A2	DRAWING NUMBER: F10000121